

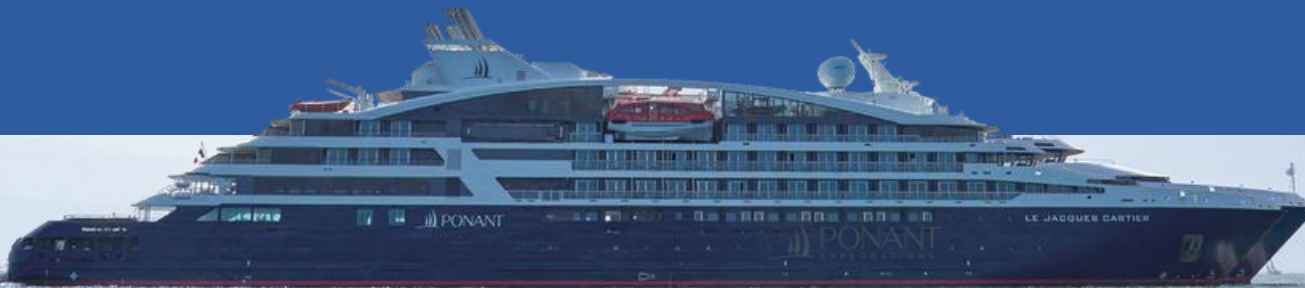
PART.

1

# Le Jacques-Cartier

## Bespoke Charter Cruise Japan 2027

An Exclusive Journey  
Powered by Hankyu Travel DMC Japan





# Table of Contents

■ Contents	p.01	● Miyajima Island	p.35
■ We charter the most beautiful season in Japan	p.02	● Hagi	p.37
■ Why we choose PONANT's "Le Jacques Cartier"?	p.03	● Shimonoseki	p.39
■ Why we charter instead of joining Ponant's regular cruises?	p.04	● Katsuura	p.41
■ Itinerary1	p.05	● Toba	p.43
■ Itinerary2	p.07	● Yaizu	p.45
■ Itinerary3	p.09	● Taganoura	p.47
■ Boarding the Expedition Cruise Ship "Le Jacques Cartier"	p.11	● Tsushima	p.49
■ What makes Le Jacques Cartier by Ponant different from other luxury cruises?		● Nagasaki	p.51
● Crew-to-guest ratio • The fusion of exploration and luxury	p.12	● Yakushima Island	p.53
● Meals	p.13	● Koshikijima Island	p.55
■ Zodiac Boats	p.15	● Iki	p.57
■ Naturalists on board	p.17	● Amakusa	p.59
■ HANKYU – Your Destination Specialist, Crafting an Exceptional Journey Through Japan Offering Bespoke Onboard Experiences & Curated Ports of Call Across Japan	p.25	● Busan	p.60
● Japanese chef	p.26	■ Staff Introduction	p.63
● Sake Relay	p.27	■ Rate	p.64
● Tuna butchering performance at the port	p.28	■ Commission	p.68
● Collaboration with local communities	p.29	■ Pre- and Post-Cruise Experiences	p.69
■ Ports of Call	p.30	● Tokyo, Yokohama / 3 nights & 4 days	p.71
● Inujima	p.31	● Kyoto, Kobe / 3 nights & 4 days	p.73
● Mitarai	p.33	■ Terms and Conditions	p.75
		■ Hankyu Travel	p.77
		■ About Hankyu Group	p.79
		■ Hankyu Hanshin Holdings	p.80
		■ Contact Us	p.81

## Features of the Hankyu Charter Cruise

We charter the most beautiful  
season in Japan



 = PONANT's First Call to Japan    = Port of Call    = Major Cities



# Why we choose PONANT's “Le Jacques Cartier”?



— Le Jacques-Cartier —

Ponant's Japan cruises have seen **steady growth every year**, with most departure dates fully booked. From 2024 to 2026, we expect to attract **over 6,000 guests**.

“Le Jacques Cartier” is a Small Expedition Ship around 10,000 tons. Visits destinations inaccessible to large ships. Anchoring offshore and using **Zodiac boats** for landings.

►► p.15



**Ten naturalists onboard** to explain Japan's Nature, Culture and History  
Language: English, French and German are available

►► p.17



**All-inclusive delicious cuisine, drinks,** (excluding some premium drinks),



luxurious interiors, **excursions,** and **attentive service**



►► p.13





# Why we charter instead of joining Ponant's regular cruises?



Your DMC Partner with  
**Extensive Knowledge of Every Corner of Japan**

▶▶ p.77



A **special 13-day itinerary** tailored for  
our valued international guests visiting Japan

▶▶ p.5~10



**Carefully selected shore excursions**

Visit places not found in guidebooks and  
experience the **essence of Japan's untouched,  
authentic landscapes**

▶▶ p.30~62



**Heartfelt Interactions** with Local Communities



**Encounter Japanese Traditions Onboard**  
Tea Ceremony, Kimono Dressing experience and  
Gastronomic creations by an Onboard Japanese chef

▶▶ p.26~28



Unforgettable stay in Japan **during iconic moments**  
like the **cherry blossom season** and **Easter celebrations**



 **HANKYU TRAVEL**  
INTERNATIONAL CO., LTD.

## CHARTER CRUISE

All these features are  
only possible through  
a full charter by  
Hankyu Travel.



# ITINERARY 1

A Timeless Voyage of Refinement

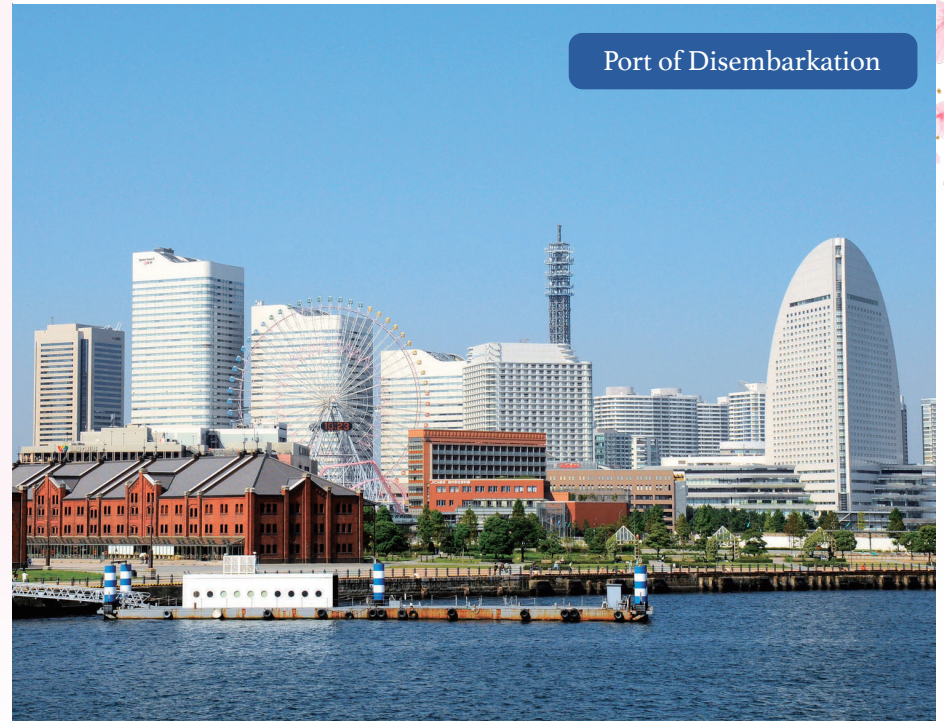
## KOBE

Port of Embarkation



## YOKOHAMA

Port of Disembarkation





## Three sailing dates

# Overview of Itinerary 1



Seto Inland Sea

### Experience The Beauty Of Setouchi

Embark on an unforgettable journey from Kobe to Yokohama, exploring Japan's cultural treasures and scenic coastlines. This cruise offers a perfect blend of art, history, and nature, with stops at picturesque Setouchi islands, historical landmarks of Ise Shrine, Kumano pilgrimage route, and an extensive visit to the Mt Fuji area.



### ITINERARY 1

#### A Timeless Voyage of Refinement

13/3/2027 to 25/3/2027

2027

Mar 13	Kobe
Mar 14	Inujima <b>Z</b>
Mar 15	Mitarai <b>Z</b>
Mar 16	Miyajima <b>T</b>
Mar 17	Hagi <b>Z</b>
Mar 18	Busan, South Korea
Mar 19	Shimonoseki
Mar 20	At sea
Mar 21	Katsuura <b>Z</b>
Mar 22	Toba <b>T</b>
Mar 23	Yaizu
Mar 24	Tagonoura
Mar 25	Yokohama

**Z** = Zodiac Landing (TBC)

**T** = Tender Boat Transfer (TBC)

※All landings are subject to weather and sea conditions.



## ITINERARY 2

The Essence of Japan Modernity and Tradition

TAGONOURA



KATSUURA - Seiganto-Ji Temple and Nachi Falls -





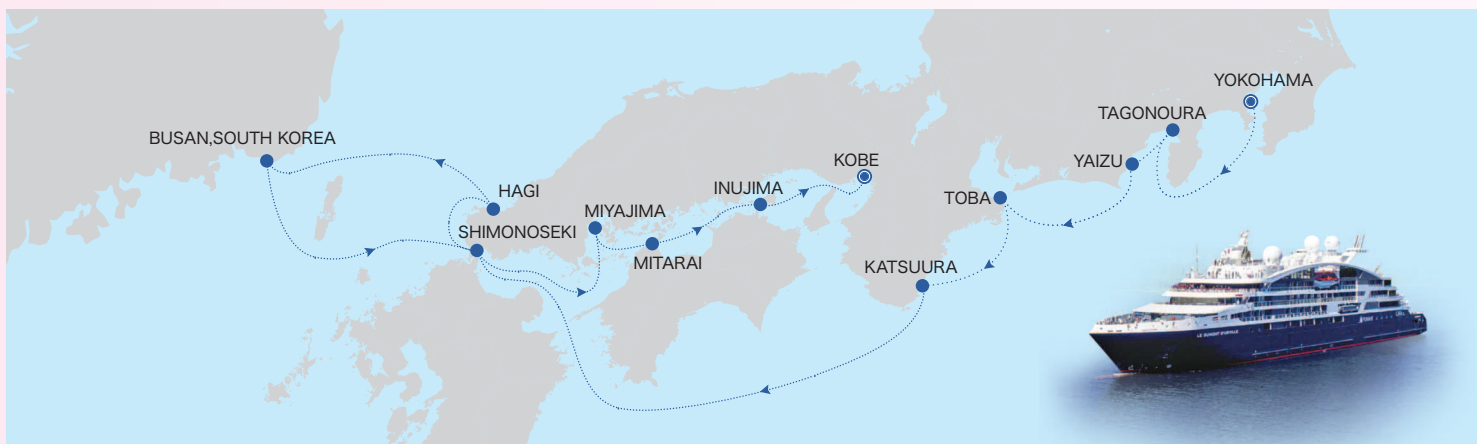
## Three sailing dates

# Overview of Itinerary 2



### The Essence of Japan: Modernity and Tradition

Embark on an unforgettable journey from Yokohama to Kobe, exploring Japan's cultural treasures and scenic coastlines. This cruise offers a perfect blend of art, history, and nature, with stops at picturesque Setouchi islands, historical landmarks, and the vibrant city of Busan, South Korea. Enjoy world-class hospitality aboard, with fine dining, entertainment, and relaxation at sea.



### ITINERARY 2

#### The Essence of Japan Modernity and Tradition

25/3/2027 to 6/4/2027

2027

Mar 25	Yokohama
Mar 26	Taganoura
Mar 27	Yaizu
Mar 28	Toba <span>T</span>
Mar 29	Katsuura <span>Z</span>
Mar 30	At sea
Mar 31	Hagi <span>Z</span>
Apr 01	Busan, South Korea
Apr 02	Shimonoseki
Apr 03	Miyajima <span>T</span>
Apr 04	Mitarai <span>Z</span>
Apr 05	Inujima <span>Z</span>
Apr 06	Kobe

Z = Zodiac Landing (TBC)  
T = Tender Boat Transfer (TBC)

※All landings are subject to weather and sea conditions.

## Three sailing dates

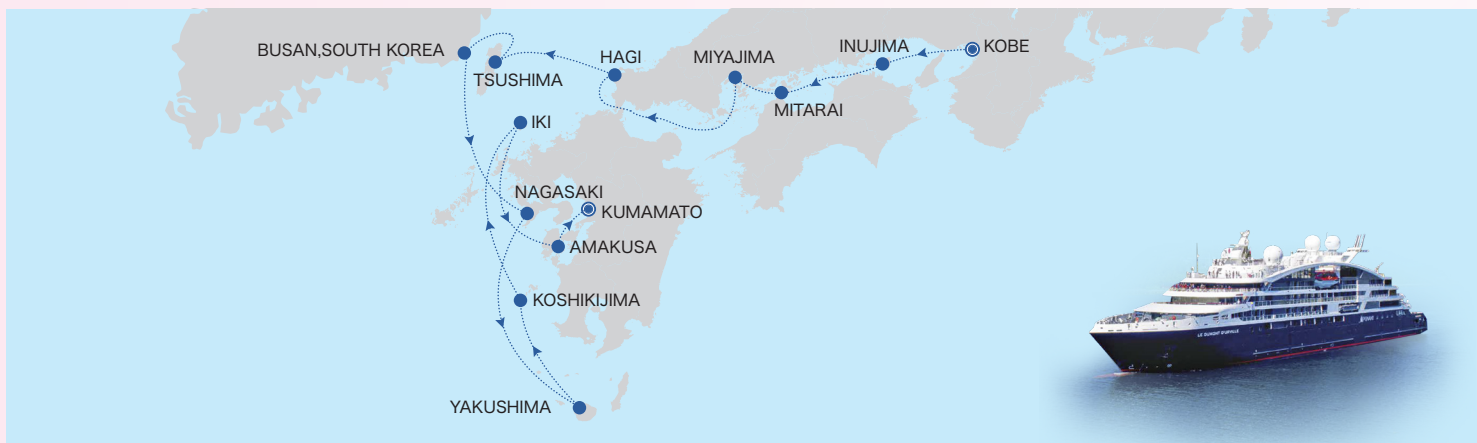
# Overview of Itinerary 3



Amakusa / Welcome Dance with Japanese authentic folk music~

### A Journey to Hidden Gems in Japan

Embark on an unforgettable journey from Kobe to Kumamoto, exploring Japan's cultural treasures and scenic coastlines. This cruise offers a perfect blend of art, history, and nature, with stops at picturesque Kyusyu islands, historical landmarks, and the vibrant city of Busan, South Korea. Enjoy world-class hospitality aboard, with fine dining, entertainment, and relaxation at sea.



### ITINERARY 3

#### A Journey to Hidden Gems in Japan

6/4/2027 to 18/4/2027

2027

Apr 06	Kobe
Apr 07	Inujima <b>Z</b>
Apr 08	Mitarai <b>Z</b>
Apr 09	Miyajima <b>T</b>
Apr 10	Hagi <b>Z</b>
Apr 11	Tsushima <b>Z</b>
Apr 12	Busan, South Korea
Apr 13	Nagasaki
Apr 14	Yakushima
Apr 15	Koshikijima Islands <b>Z</b>
Apr 16	Iki <b>Z</b>
Apr 17	Amakusa <b>Z</b>
Apr 18	Kumamoto

**Z** = Zodiac Landing (TBC)

**T** = Tender Boat Transfer (TBC)

※All landings are subject to weather and sea conditions.



## ITINERARY 3

A Journey to Hidden Gems in Japan

YAKUSHIMA - Sennensugi -



KUMAMOTO - Kumamoto Castle -





# Boarding the Expedition Cruise Ship “Le Jacques Cartier”



Hankyu Charter has chartered the rare expedition style small ship Le Jacques Cartier from PONANT. This ship allows visits to scenic Japanese ports that large vessels cannot access, places that retain the country's nostalgic and natural beauty.

The cruise offers unique experiences including visits to World Heritage and Japan Heritage sites, providing guests with unforgettable memories not available elsewhere.



## Le Jacques Cartier

### SHIP DATA

- Gross Tonnage: 9,900 tons
- Passenger Capacity: 184 guests
- Crew: 118
- Staterooms: 92
- Overall Length: 131 meters
- Beam: 18 meters
- Year Entered Service: 2020

# What makes Le Jacques Cartier by Ponant different from other luxury cruises?

1 Exceptionally high crew-to-guest ratio

1.64

This number represents how many passengers each crew member is responsible for. Since the ratio on so-called luxury ships is generally around 1.8 to 2.2, this figure illustrates just how attentive and detailed the service on Le Jacques Cartier truly is.

2 Blending two opposite experiences: exploration and luxury

Explore

Places that ordinary cruises  
ships cannot reach

×

Luxury

Elegant moments  
and spaces

On Le Jacques Cartier, you can experience both exploration and luxury—two seemingly opposite worlds—at the same time. Enjoy elegant moments onboard a ship so refined, you'd never guess it's capable of navigating even the Antarctic, Arctic, and Amazon River.



## How PONANT's Le Jacques Cartier stands out compared to other luxury cruise lines and ships

3

This is a Michelin-starred restaurant at sea, supervised by Ducasse Conceil, led by Michelin-starred chef Alain Ducasse.



We offer gourmet cuisine unique to French-flag ships and dishes inspired by charming ports of call. A variety of fresh, carefully selected ingredients, aged cheeses, and Grand Cru wines further enhance the deliciousness of the dishes.



The dining room extends to the deck outside, allowing guests to enjoy meals outdoors on pleasant days. During cruises in warmer areas, dinner can also be enjoyed on the deck. In the morning and afternoon, salads, fruits, and sweets are available from the buffet. The main course is ordered at the table. For dinner, you can choose your appetizer, soup, main course, and dessert. Of course, wine that matches your meal will be served.



# Zodiac Boats

---



The only Exploration voyage in Japan with usage of Zodiacs

High performance boats with small turns can access small islands and other remote areas. Naturalists will be on board for a safe and comfortable exploration experience.



The small ship Le Jacques Cartier, with a capacity only of 184 guests, and Zodiac boats take you to the untouched landscapes of Japan.

---



Le Jacques Cartier is equipped with Zodiac boats that take you on expeditions to small hidden islands, coves, and beaches that are inaccessible to large cruise ships.



## Naturalists on board



Alizé Riou



Laurent Lavolé



Ryo Ijichi



Nozomi Takeyabu



Martin Klumper



Olivier Delclos



coming soon

coming soon

coming soon

coming soon

Naturalist, a nature guide with a wide range of expertise, will be on board to explain the natural ecosystem of the ports of call and routes. They will accompany you during your exploration by Zodiac boat to support your intellectual experience. Seminars will be held on board during the cruise.

### ■ Specialization



### ■ Multilingual

Naturalists can speak French, English, German and other languages!

# Naturalists, continuing to fascinate passengers

## ■ Seminars on board



Seminars by Naturalists are planned to be held on board.

## ■ Enjoy nature with guidance from Naturalists



On board the Zodiac boat, learn about various natural phenomena and ecosystems.





— Naturalist —

## Alizé Riou

🇫🇷 France



Alizé Riou is French and **has been guiding for 5 years aboard cruise ships around the world**. Her story with Japan started in her childhood when she discovered the existence of the Shikoku Pilgrimage. As a big fan of Japanese culture, she promised herself to discover this country through this walk one day, and on autumn 2024, her dream finally came true. She will be happy to share everything that she learned during this adventure, and **especially her passion for Japanese gardens.**

— Naturalist —

## Laurent Lavolé

🇫🇷 France



Laurent Lavolé is a 48 years old French teacher, linguist, guide and photographer born in New Caledonia. From 2015 to 2020 he has worked and lived in Osaka, Japan, and taken the opportunity to discover and enjoy the multifaceted Japanese culture, from the more common touristic places to the remotest of areas, **“off the beaten path”**, where he would thrive just as much for there are where the true experiences hide, and where the hidden gems of the Japanese crafts and processes, the traditional knowledges and **“know-hows”** are kept away from the common touristic shine. Japan is a treasure to be sought and being a ponant guide helps him in this quest along with the passengers that follow him on this endless journey.



— Naturalist —

## Ryo Ijichi

🇯🇵 Japan



Ryo Ijichi, born in Japan, has had constant desire to guide people in the region he is inspired. Starting the field in Polar destination, Ryo eventually gained motivation in designing a product to guide people in his homeland in a different way, **going to further and remote destinations and to meet deeply the local people that lives there**. Ryo is currently Director for Japan with Ponant overseeing the design and operation of all voyages in Japan. While onboard he works as Expedition Leader

— Naturalist —

## Nozomi Takeyabu

🇯🇵 Japan



"Raised in a log cabin surrounded by the wilderness of Hokkaido, Japan, Nozomi is a **natural-born culture/nature explorer**. Highly exploration-minded, **her curiosity has taken her all around the world**. After living and exploring around the globe, she recognizes the special beauty in her own culture and the land of Japan. Japan's natural world as well as culture and history are fascinating. There is nowhere else like it in the world. **After an incredible 30-year journey exploring the world, now she is excited to return to Japan to explore more of this beautiful country as a native**. She is thrilled to share the unique wonders of Japan with others."



— Naturalist —

## Martin Klumper

🇩🇪 Germany



A German expat living in Canada, Martin has been **exposed to Japanese culture from an early age through books, movies and the practice of martial arts.** As a guide for over ten and an intrepid traveller for over twenty years he has had the opportunity to visit Japan on multiple occasions. Martin is particularly interested in **Japanese aesthetics, language and food.** In his free time, he enjoys **physical exercise, exploring the great outdoors and eating a good bowl of ramen.**

— Naturalist —

## Olivier Delclos

🇫🇷 France



As a self-employed nomad, I **discovered Japan 20 years ago**, when the offices of the association I was working for were in Tokyo. **Not a year has gone by since then that I haven't been back, whether to visit, work or occasionally even live in Japan.**

Passionate about wood working, the omnipresence of this material in both crafts and construction is a strong link that I immediately forged with the country. Having trained as a carpenter, I was immediately interested in the technical and structural peculiarities in this field, resulting from local seismic and aesthetic constraints. Today I continue to take part in small-scale projects.

It was also the architecture, of temples and sanctuaries more specifically, that opened my eyes to the influence of Shintoism and Buddhism on culture and social life. I continue to be very inspired by the integration of contemplation and letting go into the contrasting daily lives of the Japanese.

And for a number of years now, I've been working with a Japanese NGO and taking part in missions abroad, building on my extensive humanitarian experience. The opportunity for stimulating intercultural and human exchanges in external contexts.

So many aspects that I continue to discover and share with pleasure each time I visit the land of the rising sun.

# Our Destination Specialists with extensive knowledge of Japan have selected the best ports of call and special events on board.

1

## **The Soul of Washoku at Sea :**

Crafted by a Master of Japanese Cuisine



2

## **SAKE Relay: Tasting Japan Onboard**

Sourced from Local SAKE Breweries at Each Port of Call



3

## **From Port to Plate : Tuna Cutting Show**

Freshly Crafted into Sushi Onboard



4

## **Feel the Warmth of a Welcome :**

Deeply Rooted in Local Traditions





## Features of the Hankyu Charter Cruise

### 1 Arrangement to welcome carefully selected master Japanese chefs onboard



We are currently in exclusive negotiations to bring aboard master Japanese chefs carefully selected from Japan, renowned for its extensive network and partnerships across Japan, **to deliver an authentic and exquisite Japanese culinary experience onboard**. Please look forward to our forthcoming announcements as we strive to offer the true essence of Japan's rich food culture at sea.



## Features of the Hankyu Charter Cruise

2

### An exceptional lineup of curated events made possible through seamless cooperation with local authorities and community stakeholders



At Hankyu's carefully selected ports of call, we offer heartfelt hospitality through close collaboration with local governments and communities. Guests can engage in cultural experiences, connect with residents, and savor dishes made from local ingredients, adding a unique richness to the journey. One exceptional feature is the exclusive **"SAKE Relay,"** which brings premium sake from local breweries onboard to be enjoyed at the ship's bar. This priceless experience allows guests to taste renowned regional sakes without visiting the breweries, all while exploring captivating destinations during the day. It's a truly unique offering only available on the Hankyu charter.

## Features of the Hankyu Charter Cruise

3

### A captivating and thrilling tuna butchering performance at the port

AMAKUSA ~Sakitsu Fishing Port~



At select, carefully chosen ports, guests are treated to an exclusive experience featuring a live tuna cutting demonstration using freshly caught tuna brought ashore. This exceptional catch is then served onboard exclusively for guests aboard Le Jacques Cartier—an unforgettable culinary moment available only on this voyage. While premium tuna served at upscale sushi restaurants in Tokyo holds great value, **savoring tuna caught locally and expertly prepared at peak freshness onboard is a truly unparalleled experience—one of the unique highlights offered only on the Hankyu charter.**



## Features of the Hankyu Charter Cruise

4

### Exclusive cultural encounters and warm hospitality, made possible through deep local ties

MITARAI ~Gagaku : Authentic Japanese Folk Music~



At the carefully selected ports of call by Hankyu, **guests are welcomed with heartfelt hospitality, including opportunities to interact with local residents, experience traditional culture**, and enjoy cuisine made with regional ingredients — all in close collaboration with local governments. These deep connections with the community add a special touch to your journey.

AMAKUSA ~Japanese Traditional Folk Dance~







CHARTER CRUISE  
EXPLORATION OF JAPAN

# PORT EXCURSION

— Le Jacques-Cartier —





# Inujima

ITINERARY 1

ITINERARY 2

ITINERARY 3



Inujima Seirenscho Art Museum

**Inujima Island: The small island in the Seto Inland Sea that**

**supported Japanese industry from the medieval to modern periods**

A tiny island about 4 kilometers around in the Seto Inland Sea. High-quality stone was produced here, and in the olden days, it was used to build the stone walls of Edo Castle, Osaka Castle, and Okayama Castle. In 1909, a copper smelter began operations, supporting Japan's modern industry. Although it is no longer in operation, it has been reborn as an art museum, where visitors can imagine what it was like at the time.

**An intellectual tour of Inujima Island, where you can experience industrial heritage and contemporary art**

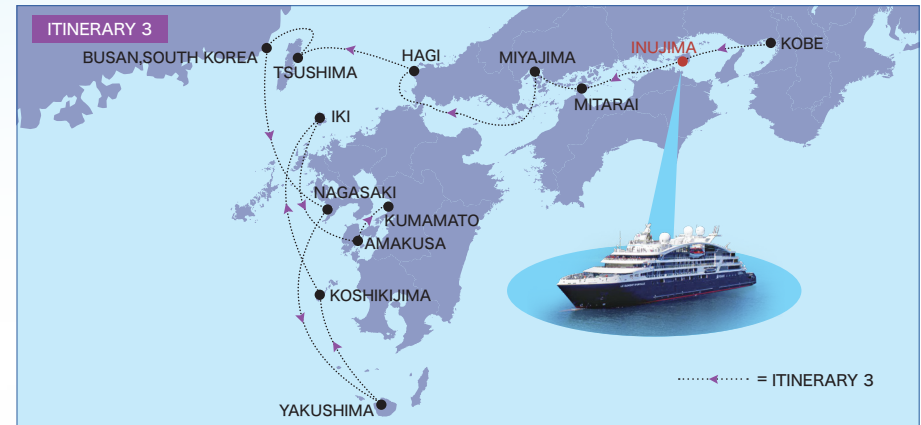
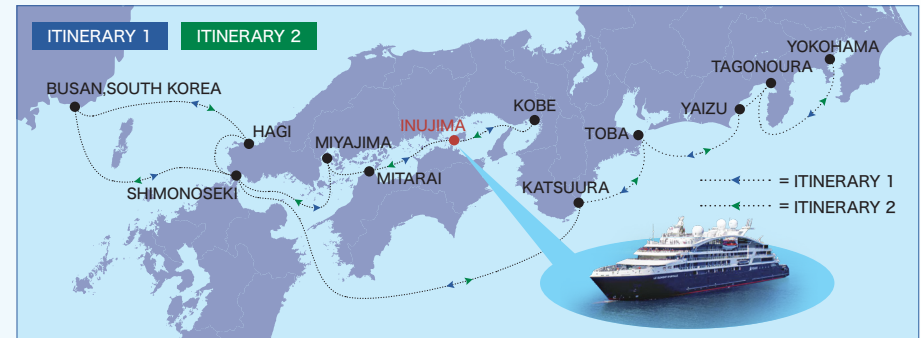
*Inujima Island is not only home to art museums, but also features contemporary art scattered throughout the island, blending with the natural environment to create a unique world of its own.* Enjoy a moment of reflection on times past while experiencing the beauty of nature.

## Inujima Seirenscho Art Museum

Constructed in 1909, the copper smelter ceased operations after only ten years, but the ruins were restored and repurposed, opening to the public in 2008. The chimneys and brick buildings of the former smelter remain intact inside the museum, allowing visitors to appreciate the works while feeling the natural daylight, the breeze, and the seasonal changes in a uniquely atmosphere. As a place where industrial history and art resonate together, we invite you to experience new emotions and discoveries.

## Inujima "Art House Project"

The Art House Project is a contemporary art initiative that began in 1998. Artists from Japan and abroad renovate old houses and vacant buildings into artworks, blending art with the landscape and history of the local area. This project is being implemented in cooperation with local communities and is highly regarded not only as a tourist attraction but also as a model case for regional revitalization. Enjoy art seamlessly integrated into everyday living spaces.





## Inujima/“Art House Project”





# Mitarai

ITINERARY 1

ITINERARY 2



Mitarai : National Designated Houses Preservation District



## Mitarai: A Port Town Echoing with Edo Elegance and Traditional Music, and A Moment of History and Grace

Mitarai is a Seto Inland Sea village that retains the streetscape of the Edo period (1603-1868), when it flourished as a port town awaiting favorable winds. It has been designated as a National Preservation District for Groups of Historic Buildings, with each structure telling stories of the past and everyday life.

### Wrapped in Traditional Music and History

As you stroll through this town rich with Edo atmosphere, *enjoy live performances of gagaku(Japanese court music) and koto(Japanese harp) music at seaside spots and inside old residences*. It's a place where music and history intertwine, offering a deep dive into the richness of Japanese culture.

### A Timeless Walk Through a Port Town

Wander along roads lined with old merchant houses and experience the former prosperity and lifestyle culture of the port town. The tranquil beauty unique to a preserved historic district provides a soothing escape.

### Heartwarming Encounters with Locals and A Journey into History

Local stalls dot the streets, where residents explain the historical background of traditional souvenirs with care. During your walk, you may receive fresh-cut flowers, experiencing the special warmth and hospitality of the locals.

## Mitarai Sea village





# Miyajima Island

ITINERARY 1

ITINERARY 2



Itsukushima Shrine

## Miyajima Island: Serene and Sacred Moments on the Island of the Gods

### Explore a Sacred Realm by Zodiac Boat

Miyajima Island, the divine island floating in the Seto Inland Sea, has been revered since ancient times as a place where gods dwell. *Ponant Cruises offers a unique Miyajima Island experience with a special approach via Zodiac boat, providing an extraordinary visit.*

### Itsukushima Shrine, A Shrine Floating on the Sea

Established in the 6th century, the current shrine buildings reflect the aristocratic culture of the Heian period with their Shinden-zukuri architectural style. The shrine and corridors built to extend over the sea create a fantastical sight that changes with the tides. This shrine, where nature and architecture harmonize, is a symbol of Japanese architectural spirit.

### Cultural Experience and Serenity at Daishoin Temple

Visit Daishoin Temple, the oldest temple on the island, founded by the revered monk Kobo Daishi. This Buddhist temple offers a different sense of quiet solemnity. *Enjoy a spiritually refreshing experience through special guided visits, blessings, and zazen meditation by the monks.* The view of the Seto Inland Sea from the temple grounds adds to the profound beauty.

### An Experience that Resonates with Body and Soul on a World Heritage Island

Itsukushima Shrine is a UNESCO World Heritage Site, celebrated for its harmony of architecture and nature. Ponant's exclusive stop allows you not just to visit, but to deeply experience the island; see its beauty, hear its silence, feel the breeze, and take it all in with your heart. Enjoy this serene, sensory-rich moment on an island woven from divinity, Buddhism, sea, and mountains.



## Itsukushima Shrine





# Hagi

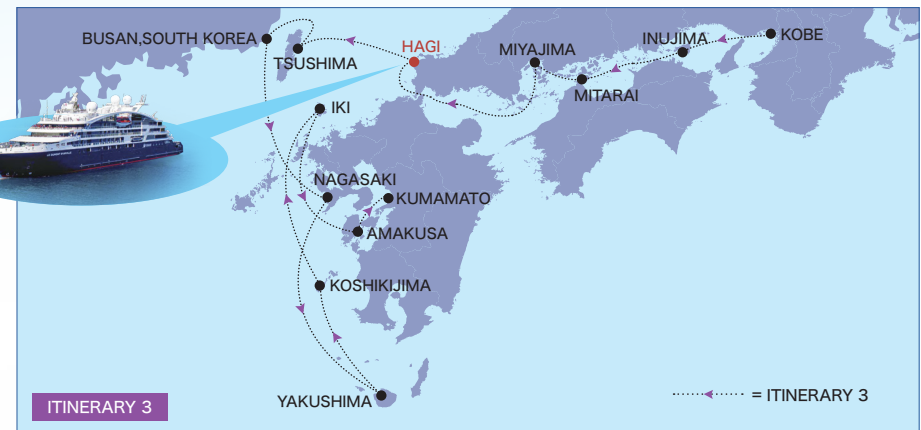
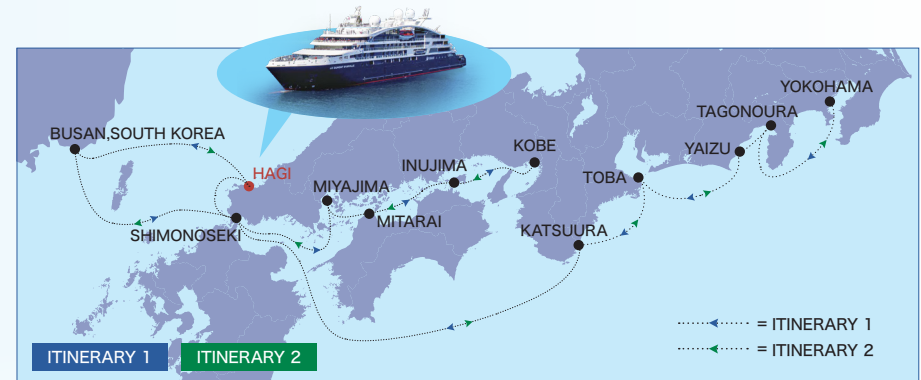
ITINERARY 1

ITINERARY 2

ITINERARY 3



Meirin Gakusha (EDO period school)



## Hagi : The town where samurais once walked

The city of Hagi in Yamaguchi Prefecture flourished as a castle town of the Mori clan during the Edo period, and even today, *the original town layout and samurai residences remain intact, making it a historical and cultural town*. It is known as the birthplace of many patriots who supported the Meiji Restoration at the end of the Edo period, such as Shoin Yoshida and Shinsaku Takasugi.

## The hometown of heroes who led and shaped the Meiji Restoration and the end of the samurai era

We offer a walking tour that takes you through the history of Japan, from the era when it was closed off from the world to its opening up and emergence onto the world stage. At Meirin Gakusha, which utilizes the site of a historic domain school, you can learn about the education of the Hagi clan and the history of the patriots of the late Edo period. By visiting Hagi Castle Ruins, Shigetsu Park, and the townscape of the castle town, which retain the atmosphere of the Edo period. Enjoy a sense of traveling through time.

## Roadside Station Hagi Seamart

The scenery of the town remains unchanged, and seafood continues to be loved as ever. Adjacent to Hagi Fishing Port, Roadside Station Hagi Seamart is well-known for its fresh fish, and experiences with local ingredients and events with residents are also planned.

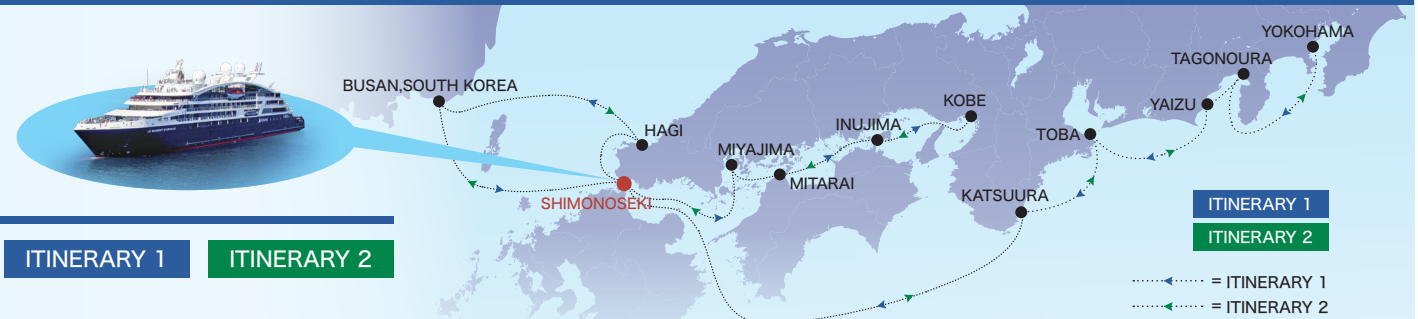


## Hagi Castle Ruins





# Shimonoseki



Kozanji Temple

## Shimonoseki : Feel the flow of history and the blessings of the sea

Located at the westernmost tip of Honshu, Shimonoseki is a port town that has prospered since olden times as a key maritime transportation hub facing the Kanmon Strait. It was the stage for numerous historical events, such as the Genpei War and the end of the Edo period, and even today, traces of its rich history remain. Another attraction is the many historical buildings scattered throughout the city, as well as the seafood represented by fugu cuisine.

### Kozanji Temple and Nagato Mori Residence

Walking through the historic town of Chofu, you will visit Kozanji Temple, famous for its highly revered Shinsaku Takasugi, and Chofu Mori Residence, which preserves the dignity of the Chofu Mori clan. Feel the atmosphere of the late Edo period as you stroll through the quietly situated temple grounds, which feature a national treasure Buddha hall, and the well-maintained Japanese garden. *At the Chofu Mori Residence, visit the interior of the residence and experience the lifestyle of the samurai class and the elegance of the architecture up close.*

### Mojiko Retro

Mojiko Retro, where the traces of the Meiji and early Showa periods remain vividly intact. In this area, you can enjoy strolling through the nostalgic atmosphere of the town, lined with stately Western-style buildings and historic architecture. As you explore important cultural properties such as JR Mojiko Station, the former Moji Mitsui Club, and the red brick architecture, you feel the spirit of the era when Moji flourished as a port town in modern Japan. Along with the beautiful scenery of the Kanmon Strait and enjoy a moment of relaxation.

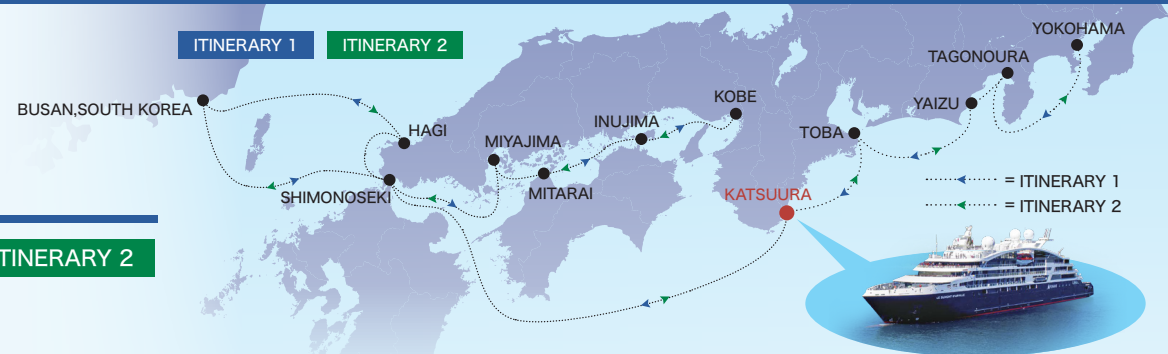


## Chofu Mori Residence and Mori Garden





# Katsuura



ITINERARY 1

ITINERARY 2



Katsuura fishing port

## Encounter Japan's Spiritual Heritage and Scenic Traditions in Nachikatsuura Exclusive Ponant Port Experience Program

Located at the southern tip of the Kii Peninsula, Nachikatsuura is a sacred area believed since ancient times to be inhabited by gods. It remains a living tableau of Japan's original landscape, where sea, mountains, prayer, and cuisine converge. As the gateway to the UNESCO World Heritage Kumano Kodo pilgrimage route, it offers a uniquely moving experience.

### Morning: Touch the Bounty of the Sea and Artisan Skill

The journey begins at the lively Katsuura Port, one of Japan's top fresh tuna landing sites. *Witness powerful scenes of tuna being offloaded and enjoy a tuna filleting show by skilled artisans. Savor the exquisite taste of fresh tuna while watching masterful knife techniques.*

### Afternoon: Find Inner Peace at the Sacred Sites of Kumano

In the afternoon, a private bus will take you to the "Sacred Sites and Pilgrimage Routes in the Kii Mountain Range." First, visit Kumano Nachi Taisha, one of the three Kumano Grand Shrines nestled in a deep forest with vivid vermilion buildings. Next, *at Seiganto-ji Temple nearby, experience a unique spiritual practice based on Shugendo (mountain asceticism), guided by monks.* The journey ends at Nachi Falls, Japan's tallest at 133 meters. A mystical place believed to be inhabited by gods, this awe-inspiring waterfall will leave a deep impression.

### Walk the Pilgrimage Path Recognized by the World

*The Kumano Kodo, once walked by emperors and ascetics, is one of only a few pilgrimage routes in the world recognized by UNESCO alongside Spain's Santiago de Compostela.* This is more than tourism, it's a journey into the soul of Japan's spiritual and natural heritage. Your time in Nachikatsuura will be an unforgettable memory.



## Seiganto Ji Temple and Nachi Falls

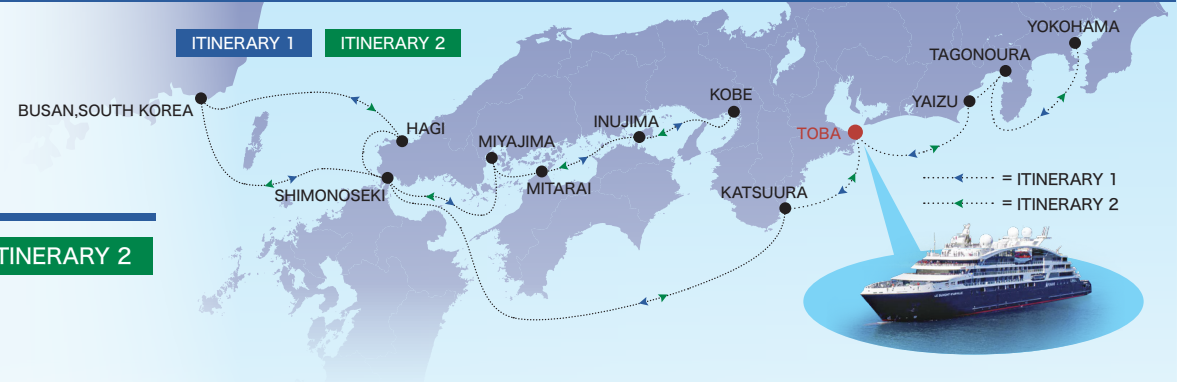




# Toba

ITINERARY 1

ITINERARY 2



## Toba : A traditional port town steeped in faith and history

This beautiful port town faces Ise Bay and has prospered since ancient times as the gateway to Ise Shrine. Blessed with abundant seafood and rich mythology and traditional culture, this region continues to attract many travelers and pilgrims.

### Ise Grand Shrine

*Ise Grand Shrine is revered as a shrine dedicated to the supreme deity of Japan and has attracted deep faith since ancient times. Freely explore the sacred grounds of the Inner Shrine (Naiku) and Outer Shrine (Geku), enveloped in a sacred atmosphere, and experience this place that resonates as the spiritual home of the Japanese people. Spend a peaceful moment in the grounds, where eternal history and natural beauty harmonize.*

### Okage Yokocho

This is a tourist area that recreates the historical townscape that flourished as the town in front of Ise Jingu. Buildings recreating the architectural styles of the Edo and Meiji periods line the cobblestone streets, allowing visitors to experience historic Japan. There are many shops selling traditional crafts and seasonal items, offering new discoveries every time you visit. Enjoy an exciting walking tour where you can experience the rich blessings of Ise and Japanese folk culture with all five senses.



## Ise Grand Shrine

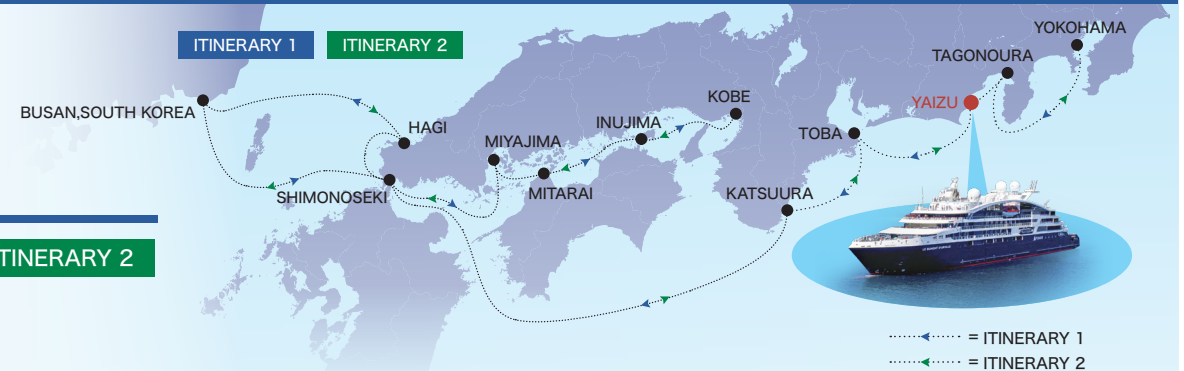




# Yaizu

ITINERARY 1

ITINERARY 2



Tea Field

## Yaizu : One of Japan's premier fishing ports and tea fields - A port town of food and culture

The city of Yaizu in Shizuoka Prefecture is a port town that has prospered as a fishing center since ancient times. Around Yaizu Port is known for its lively market and traditional bonito flake manufacturing culture and is one of Japan's leading ports in terms of fish catch.

*You can also experience Shizuoka's unique Japanese tea culture in the beautiful tea fields surrounding Yaizu.*

## Feel the bustle of local industry at one of Japan's premier fishing ports

At Yaizu Port, you can see the hustle and bustle of the auction up close. Experience the power of the scene that supports Japanese food culture and the pride of the fishing industry by seeing the fishermen at work in the port.

## Leading Japanese tea culture from the vast tea fields

Take a stroll through Shizuoka's magnificent tea fields and feel the breath of green life in the rich natural landscape. Discover Japan's tea industry and culture, which have been built up with an emphasis on harmony with nature.

————— Ogawa Fishing Port, Yaizu / morning seafood auction —————

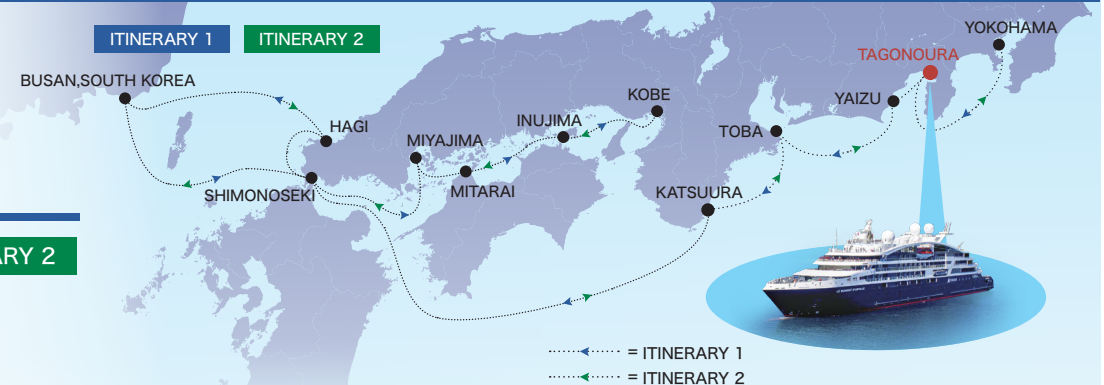




# Tagonoura

ITINERARY 1

ITINERARY 2



## The Closest Port to Mt. Fuji –

### See the Scenery Depicted in Ukiyo-e Come to Life

Tagonoura: A Port Town Where Mt. Fuji, the Sea, and Art Converge

Located in Shizuoka prefecture, *Tagonoura is known as the closest fishing port to Mt. Fuji. The area is featured in world renowned ukiyo-e works such as Hokusai's Thirty-six Views of Mt. Fuji and Hiroshige's The Fifty-three Stations of the Tokaido, representing the quintessential landscape of Japan.*

### See the Scenery That Hokusai and Hiroshige Painted

In Hokusai's Tokaido Ejiri Tagonoura Sketch, Mt. Fuji, the rough waves of the Pacific, and fishing boats are vividly depicted. In Hiroshige's work, Tagonoura and Miho no Matsubara are portrayed in fine detail, representing an iconic dream destination for travelers.



### Experience Life in a Fishing Town by the Sea

At Tagonoura fishing port, *enjoy fresh seafood such as white bait caught by local fishermen.* With Mt. Fuji in the background, the port scenery evokes the feeling of stepping into an ukiyo-e painting. Through interactions with local people, you can experience the simple yet rich lifestyle of Japan.

### A One-of-a-Kind Port Experience Where Art Meets Nature

Your time in Tagonoura is a unique blend of visual beauty and cultural depth. Walking through the landscapes once depicted in ukiyo-e, you'll taste, see, and feel a special journey like no other.

## Mt. Fuji / View from Tagonoura





# Tsushima

## ITINERARY 3



Watazumi Shrine



## Tsushima Island: Japan's Hidden Treasure – An Island of Rich Nature and Culture

Tsushima Island has played a historic role as a border island and is surrounded by stunning coastlines and mountains. It's especially known for being home to the rare Tsushima leopard cat. With historic shrines, castle ruins, cultural heritage sites, outdoor experiences, and fresh local seafood, it offers a wide range of attractions.

### Watazumi Shrine and Aso Bay

A seaside shrine symbolizing Tsushima Island, long worshipped for maritime safety and abundant catches. *Landing by Zodiac boat offers a special experience—reaching the shrine from the calm sea deepens the sense of tranquility and natural unity.* With its sea-facing main hall and breathtaking horizon views, the shrine leaves visitors with lasting memories. Afterward, enjoy a Zodiac cruise around Aso Bay, where you can admire clear waters and lush island landscapes.

### Strolling Through the Izuhara Area

Izuhara, the central area of Tsushima Island and a historic border town, is rich in culture. Visit landmarks like Izuhara Hachimangu Shrine, Banshoin Temple, and the Tsushima Museum at your own pace and experience the unique history and atmosphere of the island.



## Aso Bay





# Nagasaki



Nagasaki Atomic Bomb Museum

© Nagasaki Prefecture Tourism Association

## ITINERARY 3



## Nagasaki: A Port City Connecting Japan to the World

*Nagasaki served as Japan's sole gateway to the West during the Edo period through Dejima and later became a symbol of peace after the devastation of the atomic bomb.* With beautiful cityscapes and a deep history, Nagasaki offers emotionally resonant stories and scenes.

## Nagasaki Atomic Bomb Museum and Peace Park

The museum documents the realities of the 9 August 1945 bombing through photographs, relics, and survivors' testimonies. It's a place to quietly reflect on the tragedy and the preciousness of life, and to renew hopes for nuclear abolition. Nearby, the Peace Park surrounds the bombing's hypocenter and offers a somber yet hopeful atmosphere with the Peace Statue, memorials, fountains, and monuments, all urging a reflection on peace.

## Dejima

From 1636 to 1859, during Japan's isolation policy, Dejima was the only gateway for trade and cultural exchange with the West, especially with the Dutch. Western medicine, science, and art all flowed into Japan from here. Now, the area is faithfully restored, allowing visitors to explore merchant houses, warehouses, and residences to relive the lifestyle and international exchange of the era—a smart, historically rich attraction.



## Dejima Omotemon Bridge





# Yakushima Island

## ITINERARY 3

### Yakushima Island: An Island Where Ancient Forests Invite You to Experience the Mysteries of Life

Yakushima Island, a UNESCO World Natural Heritage site, is a truly special place, home to vast ancient forests. We invite your guests to experience the mystical Yakusugi cedar forest, and the vibrant breath of life found there, all from a truly unique perspective.

### A Special Trek to Experience the Majestic Nature of Yakusugi Cedars

Walk among Yakushima Island's iconic Yakusugi cedars, ancient trees thousands of years old, surrounded by lush moss and clear streams. *Feel the forest's deep silence and vitality. Routes can be tailored to suit any fitness level, making this a memorable experience for everyone.*

### Shiratani Unsuikyo Ravine

While many mountain and trekking courses are known for their panoramic summit views and seasonal flowers, in Shiratani Unsuikyo, nature itself takes center stage. Most notably the lush moss-covered forests created by Yakushima's uniquely rainy and humid climate offer an overwhelming display of life that is rarely seen elsewhere. This enchanting landscape, blanketed in vibrant green moss, is a true testament to the island's extraordinary natural beauty.

### Yakusugi Land

Yakusugi Land offers an easy way to experience Yakushima Island's powerful natural beauty. Located at about 1,000 meters above sea level, it features well-maintained trails where you can walk among thousand-year-old Yakusugi cedars. With safe boardwalks, clear signs, and a variety of routes, even beginners can enjoy the mystical atmosphere of this ancient forest.





## Trekking at Yakushima Island





# Koshikijima Islands

## ITINERARY 3

### Koshikijima Island: An Island Where Dramatic Cliffs and Samurai Residences Offer a Journey Through History and Nature

Floating off the western coast of Kagoshima prefecture, Koshikijima Island is renowned for its towering cliffs, untouched natural beauty, and historic townscapes lined with preserved samurai residences. Here, you can discover a hidden landscape that captures the essence of traditional Japan.

#### Cultural Encounters with Island Residents

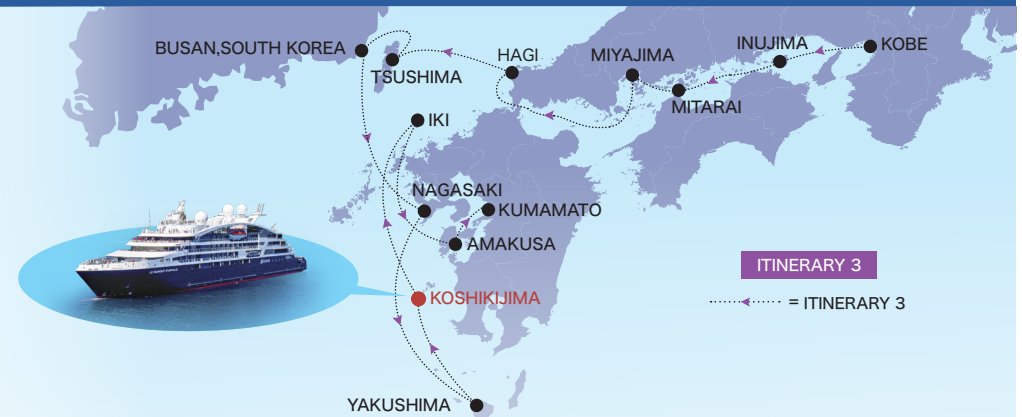
After landing by Zodiac boat, you'll be welcomed with a heartfelt ceremony by the local community. *Enjoy traditional folk dances and sample local specialties such as kibunago(herring fish), takaebi shrimp, and shochu (local liquor made from sweet potato).* Enjoy authentic island hospitality and connect with its unique culture.

#### Exploring the Historic Samurai District

Wander through streets lined with traditional samurai residences and old stone walls, set amidst lush greenery. Enjoy the tranquil atmosphere and timeless scenery, where the traditions of Japan are beautifully preserved in the island's mild climate.

#### Panoramic Views of Koshikijima Island's Dramatic Nature and Sea

*Take in stunning views of dramatic cliffs and the deep blue sea from scenic spots like Torinosu observatory* and Nagamenohama observatory. Experience the breathtaking natural beauty unique to Koshikijima Island.





## Koshiki Ohashi Bridge



Courtesy of : Satsumasendai City



# Iki Island



Iki City Ikikoku Museum

## ITINERARY 3



## Iki Island: Japan's Hidden Treasure – Rich in Nature and Faith

Surrounded by clear seas and lush greenery, Iki is an island steeped in history and spirituality, with ruins from the Yayoi period, ancient tombs, and countless shrines. Its ancient aura brings a sense of sacredness, while the preserved traditions and culture offer a unique depth. *Enjoy fresh seafood and Iki beef while immersing yourself in the island's nature, history, and culinary culture.*

## Ikikoku Museum

Home to about 2,000 artifacts excavated from local ruins and tombs—some can even be picked up to feel their weight. The museum also features engaging exhibits for all ages, like a life-size Yayoi period diorama with 160 figurines and an immersive theater on trade history.

## Tatsunoshima Island

*Just a 5-minute boat ride from Katsumoto Port in northern Iki, Tatsunoshima Island is an uninhabited island of untouched nature, with emerald-green seas, white beaches, and dramatic sea cliffs.* Once ashore, enjoy the crystal-clear waters and tranquil sands. A scenic walking path offers views from the cliffs and encounters with uniquely shaped rocks and caves.



## Haraboke Jizo/Guardian of Buddhism





# Amakusa



Courtesy of :  
Amakusa Treasure Island Tourism Association

Sakitsu Church

## ITINERARY 3



### Amakusa: A World Heritage Site Where Fishing Villages and a Culture of Prayer Endure

Nestled along a quiet bay, Amakusa is known for its unique historical landscape, where Christianity and Japanese spiritual traditions blend together. Here, you can experience a special sense of time and place that can only be found in this remarkable region.

### A Special Experience in a World Heritage Village

Take a guided walk through the solemn Sakitsu Church and the charming fishing village streets. *This tour offers a deep insight into the history of hidden Christians and Amakusa's unique culture of faith*, making for a truly memorable experience.

### Fusion of Christianity and Japanese Traditions

In Amakusa, shrines, temples, and churches stand together, reflecting a unique blend of faiths and the hidden history of Christianity. Sakitsu Church which was rebuilt in 1934 on the site of former religious persecution, combines Western architecture with tatami floors, creating a sacred space found only here. The warmth of the local people and their dedication to preserving this heritage quietly touches every visitor.

## Sakitsu Church and fishing village





# Busan / South Korea

ITINERARY 1

ITINERARY 2

ITINERARY 3



Jagalchi Market

## Busan: “Korea’s Other Side”—Welcome to Busan

*Located in southeastern South Korea, Busan is the country's second-largest city after Seoul. It blends history, culture, and tourism in a vibrant port town atmosphere—a side of Korea you won't find in Seoul.*

## Multicultural and Hybrid Atmosphere

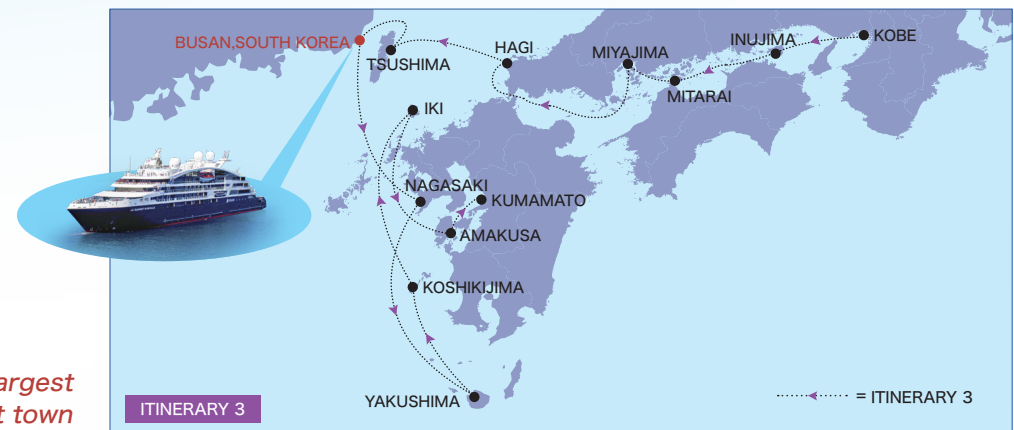
Feel traditional Korea at Haedong Yonggungsa Temple, while exploring the fusion of Japanese and Western architecture. Enjoy the city's fresh international/local mix, and from Yongdusan Park, take in panoramic views of the city.

## Colorful Streets and Photogenic Spots

Once a refugee village, Gamcheon Culture Village has been revived with colorful houses and street art lining its maze-like alleys. Songdo Skywalk, a 365m long seaside walkway shaped like a dragon, features glass flooring for a thrilling ocean view. Busan Air Cruise offers a 1.62km aerial ride over the sea in a gondola with a transparent floor, surrounded by photogenic artworks.

## Enjoy Local Korean Food with All Five Senses

At Jagalchi Market, taste ultra-fresh seafood in the lively Asian market vibe. Stroll the stalls of Gukje Market and Nampo-dong, where the street food culture thrives. Spicy local foods and the down-to-earth energy make this an ideal place to experience authentic Korean flavors.





## Haedong Yonggungsa Temple





# O · MO · TE · NA · SHI(おもてなし) :

## The spirit of wholehearted, invisible service, anticipatory hospitality without expectation of reward

### HANKYU STAFF

Our Destination Specialists have extensive knowledge of tourism and culture in Japan and overseas.



TETSUO NAKAYAMA



KAZUTOSHI GOTO



SHOKO INOGUCHI



JUN TSUCHIDA

### Hospitality-filled GUIDES

Expert Guides Offering Warm Hospitality and in-depth Knowledge of Japan.



ASAMI YAMAGUCHI



YURI HASHIYADA



EMIKO SAKAOKA



Ted WATANABE

## <Prices/ JPY >

\*Price is per person in twin use

Cabins/Suites Description	Numbers of Cabins/Suites	Room Size	Prices
Owner's Suite(OS)	2	45sqm	¥ 6,900,000
Grand Deluxe Suite(GD)	2	45sqm	¥ 6,600,000
Privilege Suite(PV)	4	32sqm	¥ 6,300,000
Prestige Suite Deck6(PR6)	~5	38sqm	¥ 6,000,000
Prestige Suite Deck5(PR5)	~13	38sqm	¥ 6,000,000
Deluxe Suite(DS)	5	27sqm	¥ 4,300,000
Prestige Stateroom Deck6(PR6)	4~14	19sqm	¥ 3,100,000
Prestige Stateroom Deck5(PR5)	3~29	19sqm	¥ 2,900,000
Prestige Stateroom Deck4(PR4)	23	19sqm	¥ 2,900,000
Deluxe Stateroom(DEL)	13	19sqm	¥ 2,500,000

Prices include: Cruise fare, shore excursions, All meals, and Alcoholic and Non-alcoholic beverages throughout the cruise, with the exception of select premium alcoholic beverages.

Prices Exclude: Gratuity for crew, Pre and Post cruise tour, Accommodation cost before and after the cruise, Port transfer.



## <Prices/ **EUR€** >

**€1=¥170 / JPY100=€0.588**

This page shows reference rates only. The actual payment will be made in Japanese Yen.

\*Price is per person in twin use

Cabins/Suites Description	Numbers of Cabins/Suites	Room Size	Prices
Owner's Suite(OS)	2	45sqm	€ 40,588
Grand Deluxe Suite(GD)	2	45sqm	€ 38,823
Privilege Suite(PV)	4	32sqm	€ 37,058
Prestige Suite Deck6(PR6)	~5	38sqm	€ 35,294
Prestige Suite Deck5(PR5)	~13	38sqm	€ 35,294
Deluxe Suite(DS)	5	27sqm	€ 25,294
Prestige Stateroom Deck6(PR6)	4~14	19sqm	€ 18,235
Prestige Stateroom Deck5(PR5)	3~29	19sqm	€ 17,058
Prestige Stateroom Deck4(PR4)	23	19sqm	€ 17,058
Deluxe Stateroom(DEL)	13	19sqm	€ 14,705

Prices include: Cruise fare, shore excursions, All meals, and Alcoholic and Non-alcoholic beverages throughout the cruise, with the exception of select premium alcoholic beverages.

Prices Exclude: Gratuity for crew, Pre and Post cruise tour, Accommodation cost before and after the cruise, Port transfer.

## <Prices/GBP£ >

£1=¥200 / JPY100=£0.5

This page shows reference rates only. The actual payment will be made in Japanese Yen.

\*Price is per person in twin use

Cabins/Suites Description	Numbers of Cabins/Suites	Room Size	Prices
Owner's Suite(OS)	2	45sqm	£ 34,500
Grand Deluxe Suite(GD)	2	45sqm	£ 33,000
Privilege Suite(PV)	4	32sqm	£ 31,500
Prestige Suite Deck6(PR6)	~5	38sqm	£ 30,000
Prestige Suite Deck5(PR5)	~13	38sqm	£ 30,000
Deluxe Suite(DS)	5	27sqm	£ 21,500
Prestige Stateroom Deck6(PR6)	4~14	19sqm	£ 15,500
Prestige Stateroom Deck5(PR5)	3~29	19sqm	£ 14,500
Prestige Stateroom Deck4(PR4)	23	19sqm	£ 14,500
Deluxe Stateroom(DEL)	13	19sqm	£ 12,500

Prices include: Cruise fare, shore excursions, All meals, and Alcoholic and Non-alcoholic beverages throughout the cruise, with the exception of select premium alcoholic beverages.

Prices Exclude: Gratuity for crew, Pre and Post cruise tour, Accommodation cost before and after the cruise, Port transfer.



## <Prices/USD \$ >

**\$ 1=¥145 / JPY100= \$ 0.69**

This page shows reference rates only. The actual payment will be made in Japanese Yen.

\*Price is per person in twin use

Cabins/Suites Description	Numbers of Cabins/Suites	Room Size	Prices
Owner's Suite(OS)	2	45sqm	\$ 47,586
Grand Deluxe Suite(GD)	2	45sqm	\$ 45,517
Privilege Suite(PV)	4	32sqm	\$ 43,448
Prestige Suite Deck6(PR6)	~5	38sqm	\$ 41,379
Prestige Suite Deck5(PR5)	~13	38sqm	\$ 41,379
Deluxe Suite(DS)	5	27sqm	\$ 29,655
Prestige Stateroom Deck6(PR6)	4~14	19sqm	\$ 21,379
Prestige Stateroom Deck5(PR5)	3~29	19sqm	\$ 20,000
Prestige Stateroom Deck4(PR4)	23	19sqm	\$ 20,000
Deluxe Stateroom(DEL)	13	19sqm	\$ 17,241

Prices include: Cruise fare, shore excursions, All meals, and Alcoholic and Non-alcoholic beverages throughout the cruise, with the exception of select premium alcoholic beverages.

Prices Exclude: Gratuity for crew, Pre and Post cruise tour, Accommodation cost before and after the cruise, Port transfer.

## Commission Structure

---

- 1 A standard commission of 15% will be paid on the sales price.
- 2 Agents with outstanding sales performance may be eligible for an additional commission of several percent.



CHARTER CRUISE  
EXPLORATION OF JAPAN

# Tailor-made Pre- and Post-Cruise Experiences





## Tailor-made Pre- and Post-Cruise Experiences



- ▶ Explore Japan with Hankyu,  
– The Travel Expert
- ▶ Ideal 3-night and 4-day Trip to Japan,  
– Perfect for First-Time and Returning  
Visitors
- ▶ Private hired Guide and Car
- ▶ 5-star hotel and Green Car/1st class  
Shinkansen

### Sample Itinerary

3-night & 4-day around Tokyo  
Mt. Fuji, Kamakura, and  
Yokohama



3-night & 4-day in Kyoto  
Sake tasting, Tea ceremony,  
Gion area, Golden Pavilion,  
and more





## Tailor-Made Pre & Post Cruise Tour Sample Itinerary

### ➤ Tokyo, Yokohama 4 Days



Available as :

post-cruise tour option for Itinerary 1  
starting from 25/03/2027 and ends on 28/03/2027

pre-cruise tour option for Itinerary 2  
starting from 22/03/2027 and embarking on 25/03/2027

# From JPY3,899,900

(including 12-night voyages  
at JPY 2,900,000 + 3-night tour)

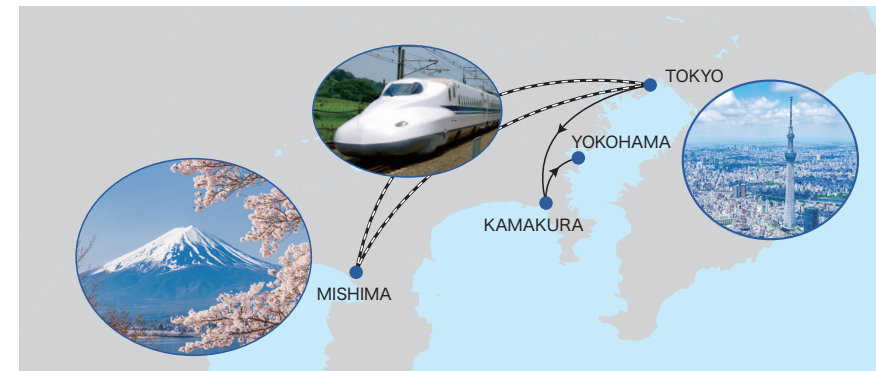
\*Price is per person in twin use.

\*For guests booking a **Prestige Stateroom (Deck 4/5)**

\*SGL occupancy from JPY7,077,400

(JPY 3,899,900 for 1/2 twin + JPY 3,177,500 for S/E)

\*Including private transfer and English speaking guide throughout



#### — Day 01: Arrival – Transfer to Hotel

B : 0 L : 0 D : 0

Private transfer by hired car.

Accommodation: The Capitol Hotel Tokyu or similar (3 nights)



\*Vehicle shown is just an example.  
A car will be arranged according to  
the number of participant(s).

## — Day 02: Full-Day Tokyo Sightseeing

B:1 L:1 D:0

Visits include: TeamLab, Tsukiji Outer Market & Sushi Experience, Tokyo Skytree, Edo-Tokyo Museum  
Evening Optional Tour: Lost in Translation Tour (Shibuya Crossing, Golden Gai, Park Hyatt Tokyo Bar)



SUMIDA River and TOKYO Sky Tree



SHIBUYA Crossing

## — Day 03: Mt. Fuji Day Trip

B:1 L:0 D:0

Travel to Mishima by Shinkansen (Green Car/1st class)  
Visits include: Mt. Fuji 5th Station, Mt. Fuji World Heritage Center, Oishi Park, Itchiku Kubota Art Museum  
Return to Tokyo by Shinkansen (Green Car/1st class)



Mt. Fuji & Shinkansen



Shinkansen (Green Car/1st class)

## — Day 04: Tokyo – Kamakura – Yokohama Port

B:1 L:0 D:0

Visits include: Great Buddha, Hasedera Temple, Hokokuji Temple (Bamboo Grove and served MATCHA and Japanese sweets)



Great Buddha



Hasedera Temple



## Tailor-Made Pre & Post Cruise Tour Sample Itinerary

### ➤ Kyoto, Kobe 4 Days



Available as :

pre-cruise tour option for Itinerary 1

starting from 10/03/2027 and embarking on 13/03/2027

post-cruise tour option for Itinerary 2

starting from 06/04/2027 and ends on 09/04/2027

pre-cruise tour option for Itinerary 3

starting from 03/04/2027 and embarking on 06/04/2027

## From JPY3,789,700

(including 12-night voyages  
at JPY 2,900,000 + 3-night tour)

\*Price is per person in twin use.

\*For guests booking a **Prestige Stateroom (Deck 4/5)**

\*SGL occupancy from JPY6,910,000

(JPY 3,789,700 for 1/2 twin + JPY 3,120,300 for S/E)

\*Including private transfer and English speaking guide throughout



#### — Day 01: Arrival – Kansai Airport to Kyoto

B : 0 L : 0 D : 0

Private transfer by hired car to your hotel in Kyoto

Leisure time or optional evening activity

Accommodation: HOTEL THE MITSUI KYOTO or similar



\*Vehicle shown is just an example.  
A car will be arranged according to  
the number of participant(s).



— Day 02: Full-Day Kyoto Sightseeing  
– Western Kyoto

B : 1 L : 0 D : 0

Visits include: Arashiyama Bamboo Grove, Sagano Scenic Railway, Kinkaku-ji (Golden Pavilion), Nijo Castle, Gion district



Sagano Scenic Railway



Arashiyama Bamboo Grove



Nijo Castle

— Day 03: Full-Day Kyoto Sightseeing  
Southern & Eastern Kyoto

B : 1 L : 0 D : 0

Visits include: Fushimi Inari Taisha Shrine, Sake tasting in the Fushimi district, Murin-an Garden (guided by a professional gardener), Traditional tea ceremony



Murin-an Garden

— Day 04: Kyoto to Kobe Port

B : 1 L : 0 D : 0

Private transfer by hired car from Kyoto to Kobe Port  
– Embarkation for your next journey



# Terms and Conditions

## [Deposit and Final Payment]

- Deposit Amount
  - 25% of total cruise fare
- Final Payment Due Date
  - 90 days prior to sailing

## [Cancellation fees]

- Cruise service fees
  - Up to 15 days after the date of Conclusion of the Contract: no cancellation fees
  - From 15 days after the date of Conclusion of the Contract to 365 days before the cruise departure: JPY 25,000 per passenger per cruise
  - From 364 days to 211 days before the cruise departure: 10% of the cost of the service
  - From 210 days to 91 days before the cruise departure: 25% of the cost of the service
  - Less than 91 days before the cruise departure: 100% of the cost of the service
- Fees for other services:
  - Group land-based services under the Contract or Private/on demand services:
    - Up to 15 days after the confirmation date: no cancellation fee,
    - From 15 days prior to departure to 211 days prior to the cruise departure: 10% of the total cost of the services
    - From 210 days to 91 days prior to the cruise departure: 25% of the total cost of the services
    - Less than 91 days prior to the cruise departure: 100% of the total cost of the services





# “Leading Japan’s Travel Industry with Tradition and Scale”

OVER 75 YEARS HISTORY

SINCE  
 **1948**

HANDLE 35,000 TRAVELERS YEARLY  
FOR INBOUND TRAVEL

 **35,000**

OVER 2,500 EMPLOYEES IN HANKYU

OVER  
 **2,500**  
EMPLOYEES

OVER 2,000,000 TRAVELERS  
FOR DOMESTIC TRAVEL

 **2,000,000**



## HANKYU TRAVEL

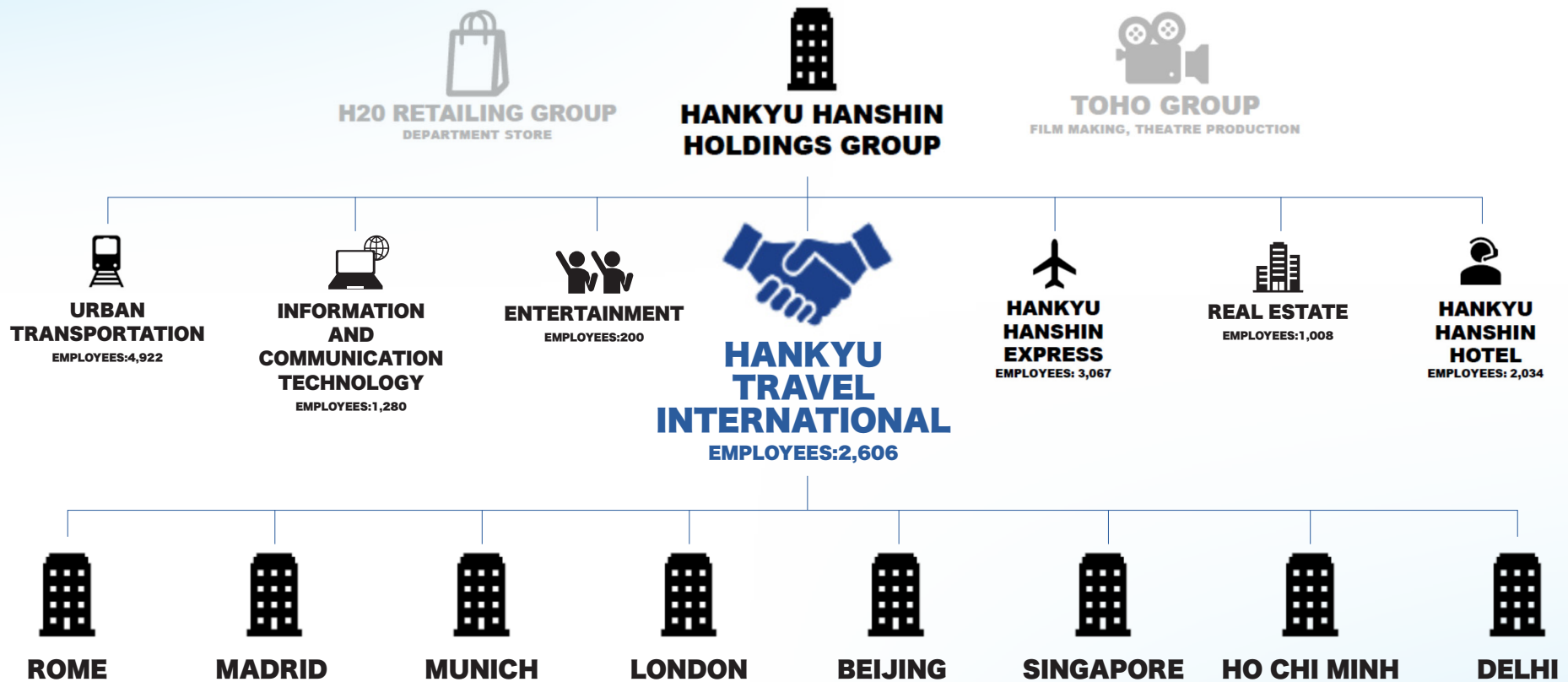
### Nationwide Reach, Local Presence

We are an expert Travel Agency  
that knows the entire country of Japan,  
covering approximately  
3,000km north to south,  
not just the cruise destinations.





# HANKYU GROUP



# HANKYU HANSHIN HOLDINGS

## 1 Urban Transportation



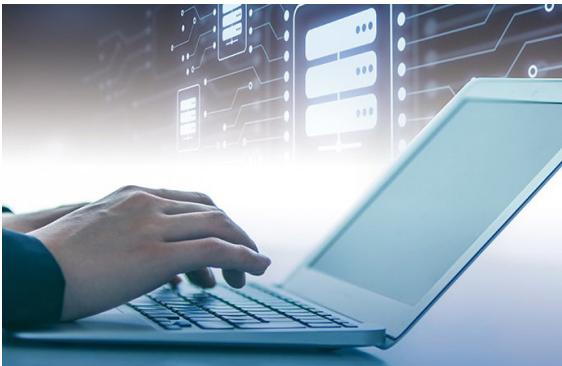
## 2 Real Estate



## 3 Entertainment



## 4 Information & communication



## 5 Travel



## 6 International Transportation







**HANKYU TRAVEL**  
**INTERNATIONAL CO., LTD.**

## Discover Our Sales Materials



website



e-book



Media Library



+81(0)3-6745-7357



[luxury-hankyu@hei.hankyu.co.jp](mailto:luxury-hankyu@hei.hankyu.co.jp)



<https://luxury-hankyu.com>

<https://www.hankyu-travel.com/english/e-book/>

<https://bit.ly/HankyuPONANT>

PIC : Shoko Inoguchi